



Black Lion Trading, S.A.
CONNECTING CAPITAL & OFF MARKET ASSETS
Panama City, Panama

Palm Oil Plantation

Presented By
Richard Zepeda

Black Lion Trading, S.A.

520.305-8777

rzepeda@blacklion-trading.com

This information has been secured from sources we believe to be reliable, but we make no representations or warranties, expressed or implied, as to the accuracy of the information. Investors must verify the information and bear all risk for any inaccuracies. Black Lion Trading is a service mark of Black Lion Trading, S.A.

Confidential and Proprietary

Palm Oil Plantation

Development Overview




Finca Salto Verde, Comunidad Tasbapauni
Municipio de Prinzapolka, R.A.A.N.

Confidential and Proprietary

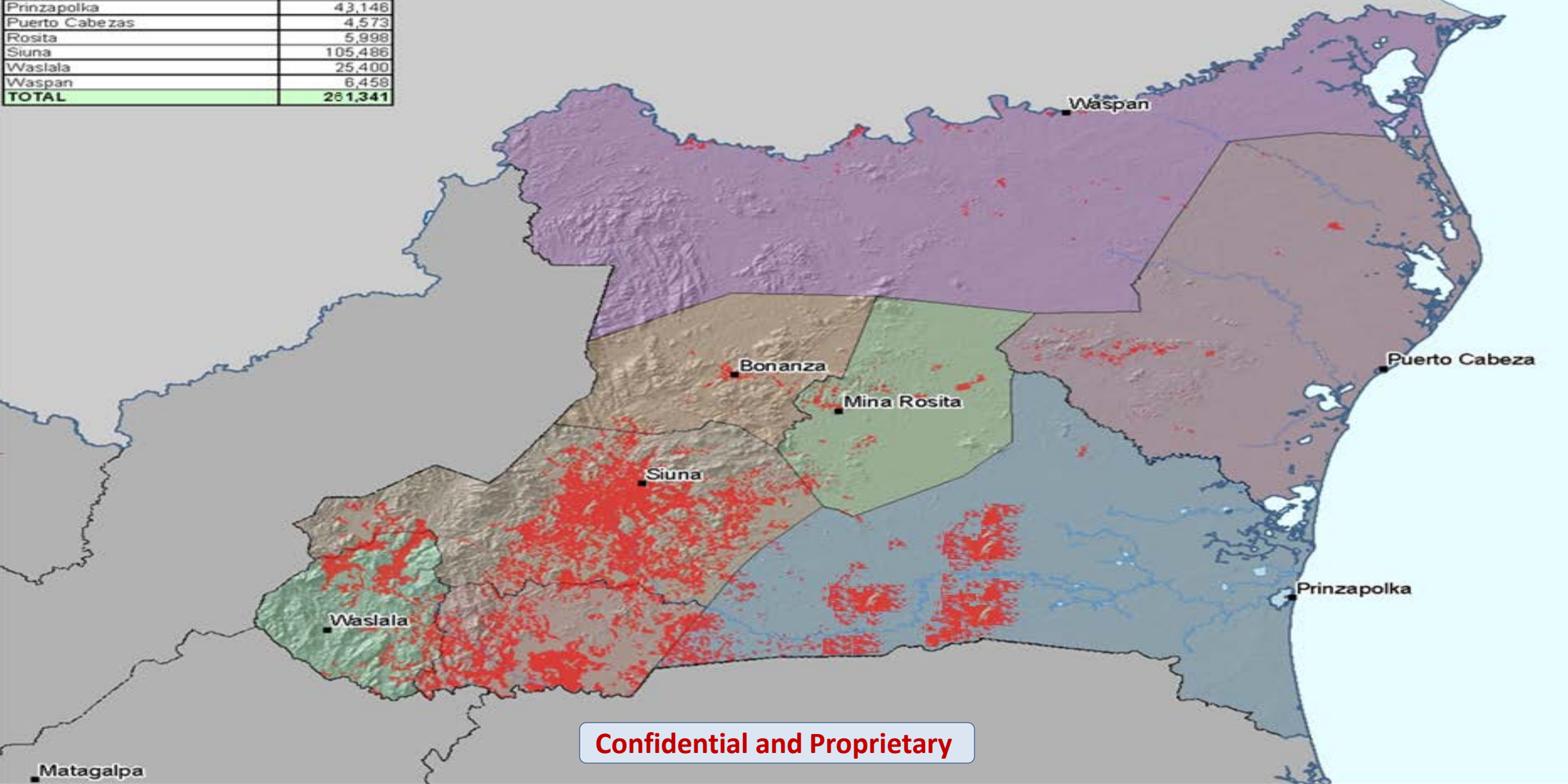


Black Lion Trading

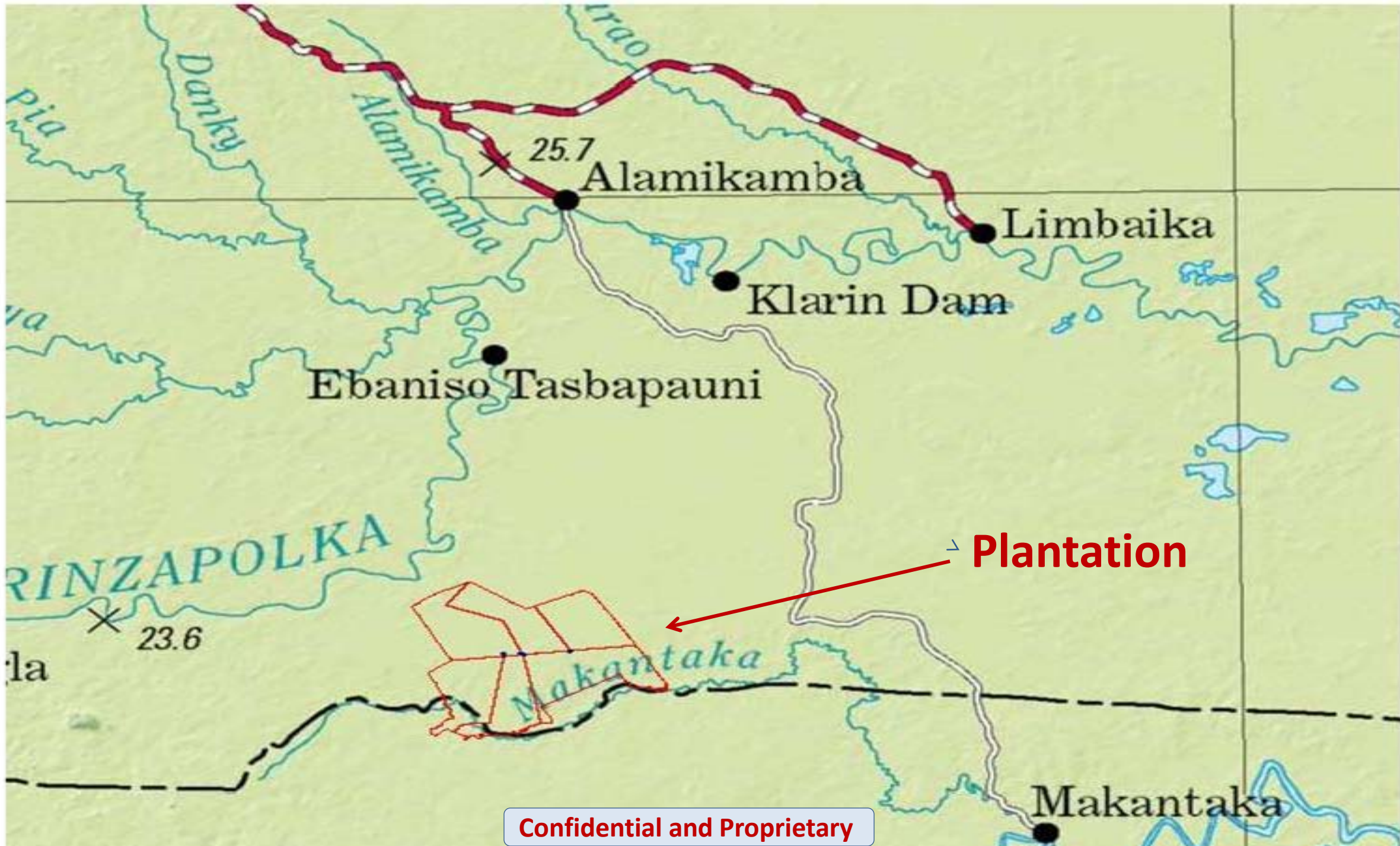
PALMA

 Sin Riego

PALMA R.A.A.N.	
Municipio	Sin Riego
Bonanza	3,215
Mulukuku	57,066
Prinzapolka	43,146
Puerto Cabezas	4,573
Rosita	5,998
Siuna	105,486
Waslala	25,400
Waspan	6,458
TOTAL	281,341

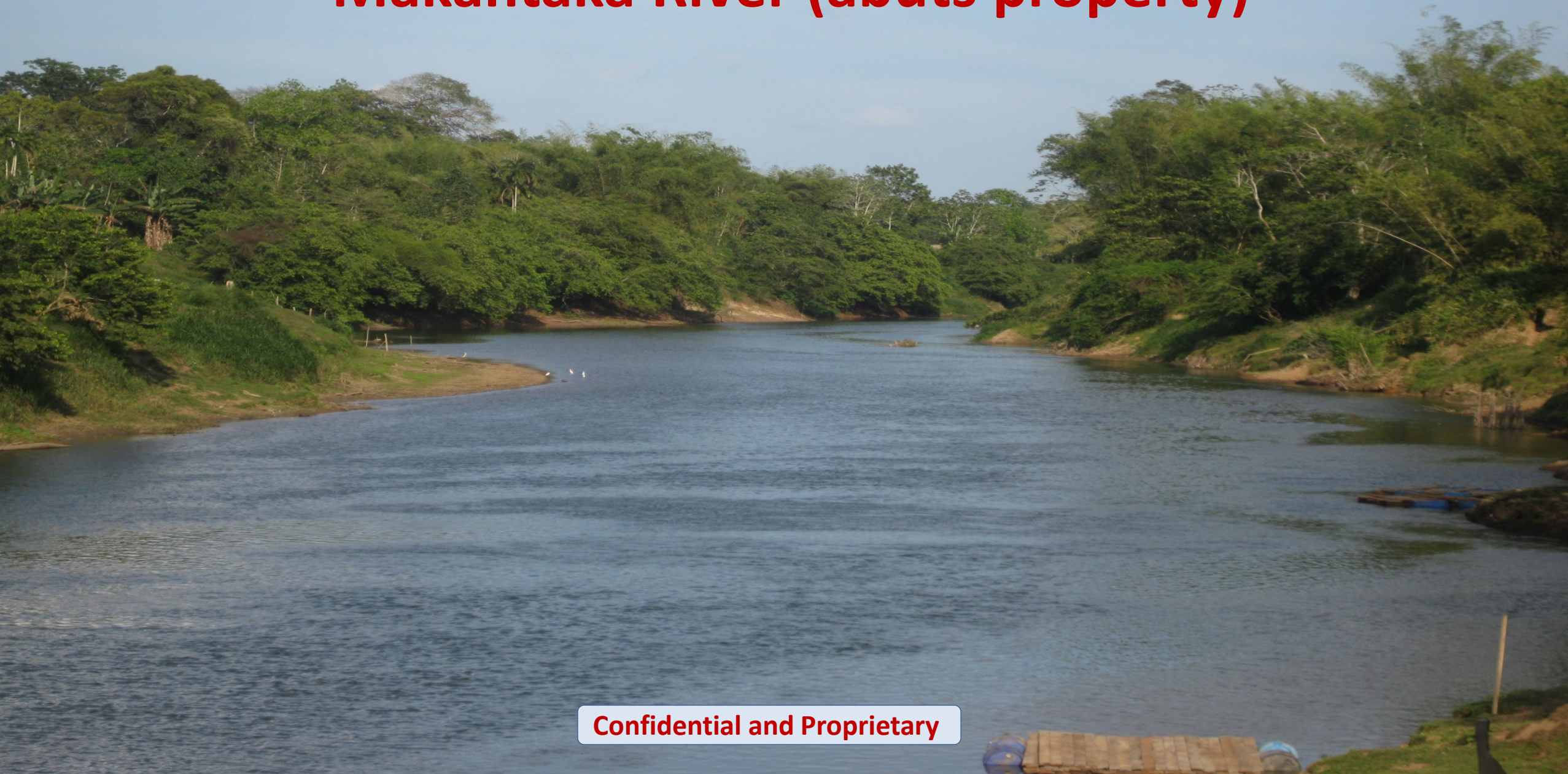


Confidential and Proprietary



Confidential and Proprietary

Makantaka River (abuts property)



Confidential and Proprietary

Pre-Development Out Reach

Establish and Strengthen Local and Community Relations:

- Outreach and Coordination at the local level:
 - Local Municipal Approval
 - Local Autonomous Communities approvals
 - Public Service providers: Food Supply, Transportation, Utilities, Etc.
 - North Atlantic Autonomous Region (RAAN) Approval
- Development of National Relations
 - General Population at large (inform and nurture support)
 - Central Government Approval and Support
 - National Police
 - Nicaraguan Armed Forces

Confidential and Proprietary



Black Lion Trading

Pre Development

Building Relationships within the Local Community



Confidential and Proprietary



Black Lion Trading

Socio-Economic Impact:

The project development was designed to consider and address community, socio-economic and environmental concerns:

- Owner operated with an onsite presence
- Community participation and involvement
- Sustainable management of natural resources
- Focus on social impacts and effects of the project on the local community

To Date:

- Permanent Jobs generated: 350
- Temporary Jobs generated: 150
- Economic affect on local service suppliers (10)
- Food suppliers, combustibles, transportation and others.
- Development of workers living quarters
- Identified Families that have benefited from the project 500 (3,000 people)

Confidential and Proprietary



Black Lion Trading

Current Status of Project Development

Infrastructure and Building Construction has been achieved utilizing raw materials from the site and local labor:

- Workforce Housing
- Kitchen
- Dining hall
- Office building
- Housing for Agriculture experts and Management personnel
- Warehousing and Storage for Equipment and Materials
- Radio - Communications building and Satellite Internet
- Basic electrical services
- Internal Roads, Primary, Secondary and Tertiary Drainage

Confidential and Proprietary



Black Lion Trading

Project Development

Construction of onsite housing for Agriculture experts and Management personnel



Confidential and Proprietary

Project Development

Construction of Offices



Confidential and Proprietary



Black Lion Trading



Confidential and Proprietary

Construction of Food Services, Kitchen and Dining Hall



Confidential and Proprietary



Black Lion Trading

Warehousing and Equipment Storage



Confidential and Proprietary



Black Lion Trading

Main Camp Building



Confidential and Proprietary



Black Lion Trading

Establishment of the Nursery

Phase 1 125,000 seeds

Phase 2 125,000 seeds

Phase 3 100,000 seeds

Phase 4 175,000 seeds

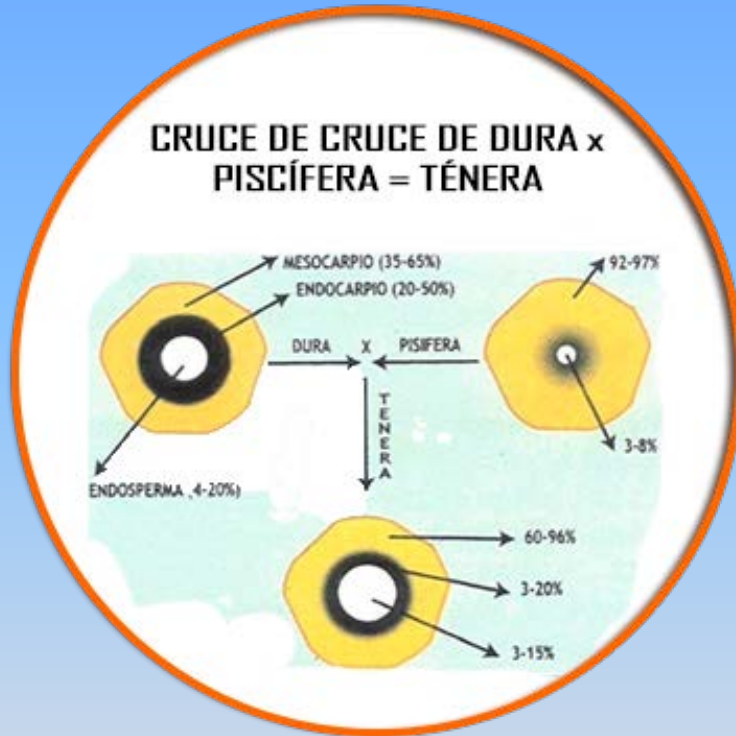
Phase 5 100,000 seeds

Phase 6 175,000 seeds (ongoing)

Total: 800,000 seeds

Species Genetics Information

DAMI seed species & genetics information



- Throughout the world, DAMI is recognized as the leader in the production of high-grade oil palm planting material, thanks to the following proven characteristics of its seeds and planting material:

- **High yields of fresh fruit bunches (FFB):** Over 26mt FFB/ha/year, with yields of 30 to 35mt FFB/ha commonly achieved in favorable environments.

- **Very early yields.** Dami material is renowned for its precocity with commercial harvesting commencing 24 months after field planting. Yields above 10mt FFB/ha are obtained during the first year of harvest, with up to 15t-20mt FFB/ha commonly achieved at plantation levels.

- **Exceptional extraction rates:** Reaching over 24% CPO at the mills with kernel (KPO) extraction rates of 6%. Average production yields of CPO and KPO above 7 mt / ha.

Confidential and Proprietary



Black Lion Trading



Confidential and Proprietary



Confidential and Proprietary

Development of the Nursery

Clearing and Land Preparation



Confidential and Proprietary

Development of the Nursery



Confidential and Proprietary



Confidential and Proprietary



Confidential and Proprietary



Confidential and Proprietary

Development of the Nursery irrigation system



Confidential and Proprietary

Development of the Nursery irrigation system



Confidential and Proprietary

Irrigation Pump



Confidential and Proprietary

Germinated seeds



Confidential and Proprietary



Black Lion Trading

Planting germinated seeds



Confidential and Proprietary



Confidential and Proprietary

Replanting of doubles (Multiple Propagation)



Confidential and Proprietary

Nursery

Confidential and Proprietary



Confidential and Proprietary

Operations Center



Confidential and Proprietary

Helicopter view of the Nursery



Confidential and Proprietary

Seed to Nursery to Field



Confidential and Proprietary



Black Lion Trading

Mature Nursery



Confidential and Proprietary



Black Lion Trading



Confidential and Proprietary

Transplanting into production lots



Confidential and Proprietary



Black Lion Trading





Confidential and Proprietary

Planted Production Lots

An aerial photograph of a vast agricultural field. The field is divided into several large sections by dirt roads and irrigation channels. Each section contains rows of young, green plants, likely a crop like corn or soybeans, planted in a grid pattern. The overall landscape is flat and green, with some trees visible in the distance under a clear sky.

Confidential and Proprietary

Internal Roads



Confidential and Proprietary



Confidential and Proprietary

Fruit Bunches

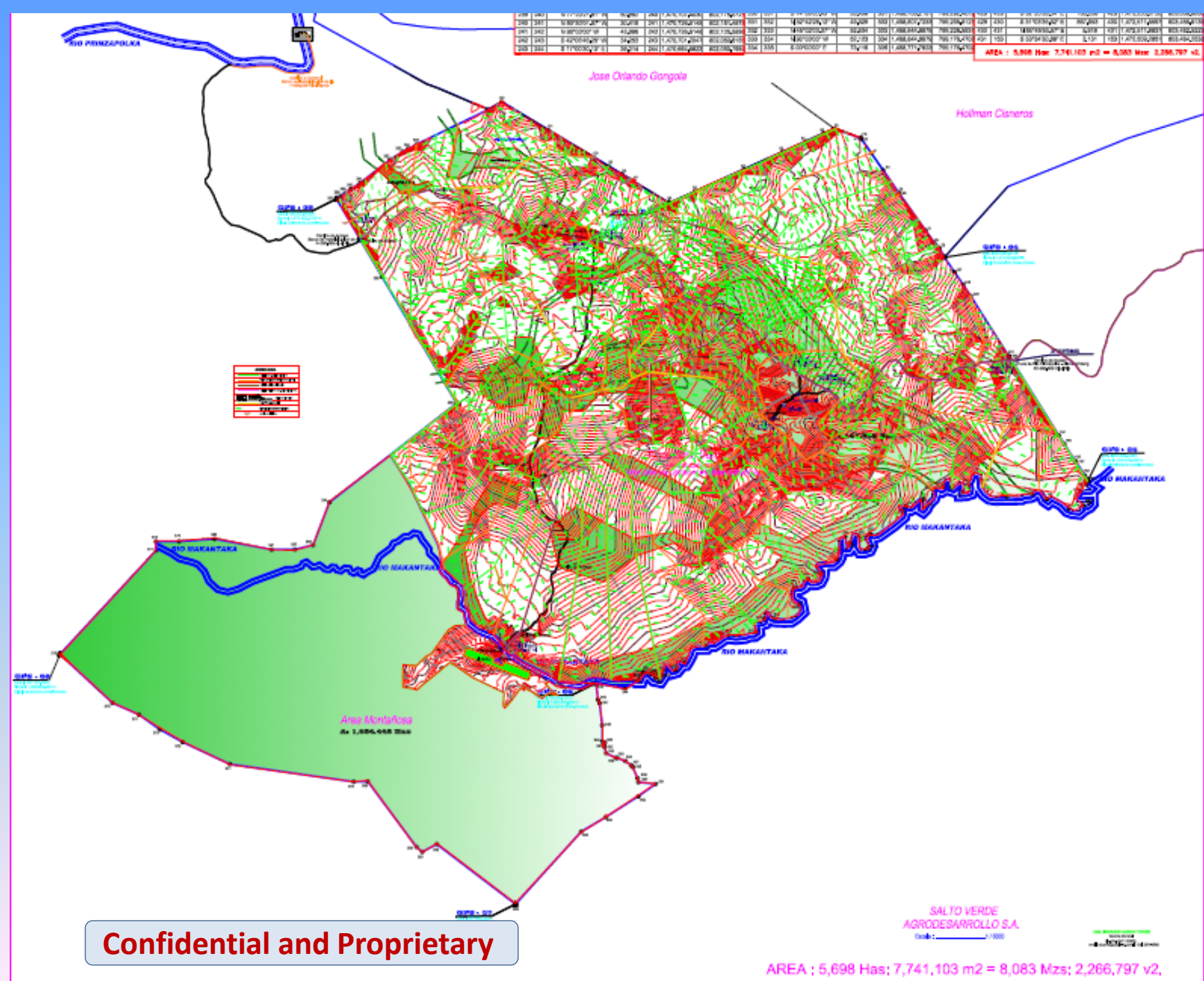
Confidential and Proprietary

Cross Section of Palm Oil Fruit



Confidential and Proprietary

Topographical Survey



Black Lion Trading

Confidential and Proprietary

SALTO VERDE
AGRODESARROLLO S.A.
Escala: 1:1000

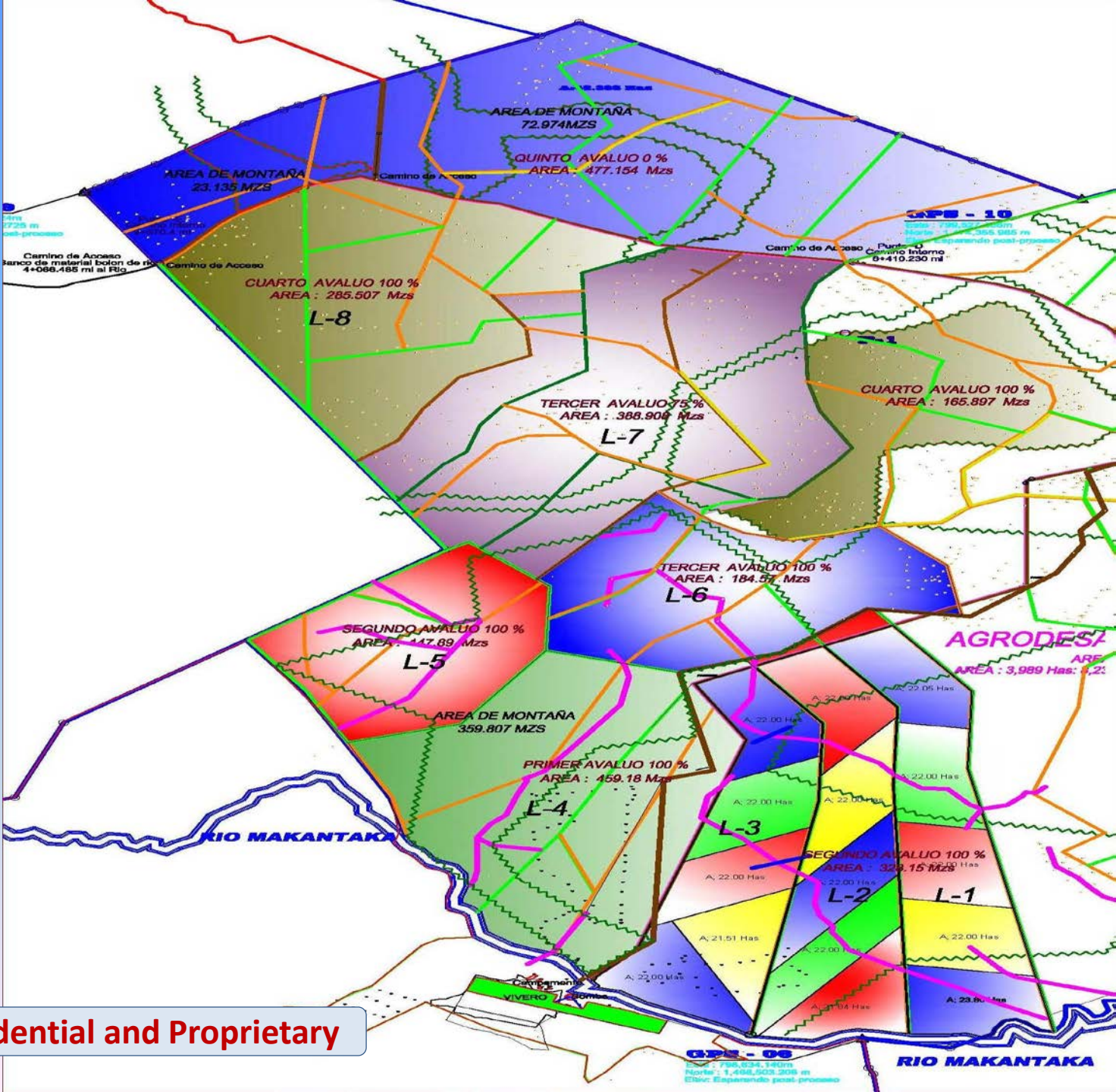
AREA : 5,698 Has; 7,741,103 m2 = 8,083 Mzs; 2,266,797 v2.

Plantation Master Plan



Black Lion Trading

Confidential and Proprietary



Horizontal infrastructure for the Palm Oil Plantation.

- Topographical Replanting work
- Construction of primary , secondary and tertiary roads
- Construction of primary , secondary and tertiary drainage systems
- Preparation for the production lots with ideal spatial layout

Confidential and Proprietary



Black Lion Trading

Item	Project	U-M
1	Roads of 5 meter width	58.24 KM
2	Drainage Canals	42.35 KM
3	Leveling of Canals	9.66 KM
4	Principal Drainage	10.01 KM
5	Road - Canal	14.47 KM
6	Material Road to the bank of Rio-Bolon	4.04 KM
7	Internal principal road	5.71 KM
8	Cultivable area ready for blading	1,154.32 HAS
Total		
Note:	KM= Kilometer. HAS=Hectare/2.47 acres	

Confidential and Proprietary



Black Lion Trading

Completed infrastructure to date

- Total roadwork completed (primary, Secondary and canal roads): 82.50 km
- Total completed drainage canals (primary, leveled or secondary): 62 km
- Note: Not included is the network of tertiary canals within the production lots (estimated at over 400 km)

Confidential and Proprietary



Black Lion Trading

Transport of machinery into site



Confidential and Proprietary



Black Lion Trading



Confidential and Proprietary

Earthwork and drainage construction



Confidential and Proprietary



Black Lion Trading

Clearing and road construction



Confidential and Proprietary



Confidential and Proprietary



Confidential and Proprietary



Confidential and Proprietary



Confidential and Proprietary



Confidential and Proprietary



Confidential and Proprietary



Confidential and Proprietary



Confidential and Proprietary



Confidential and Proprietary

Drainage Construction



Confidential and Proprietary



Confidential and Proprietary



Confidential and Proprietary



Preparing the Production lots for planting



Confidential and Proprietary



Irrigation and tertiary surface drainage

Confidential and Proprietary



Confidential and Proprietary



Confidential and Proprietary



Confidential and Proprietary



Black Lion Trading, S.A.
CONNECTING CAPITAL & OFF MARKET ASSETS
Panama City, Panama

This information has been secured from sources we believe to be reliable, but we make no representations or warranties, expressed or implied, as to the accuracy of the information. Investors must verify the information and bear all risk for any inaccuracies. Black Lion Trading is a service mark of Black Lion Trading, S.A.

Confidential and Proprietary